
Electrical Distribution Safety

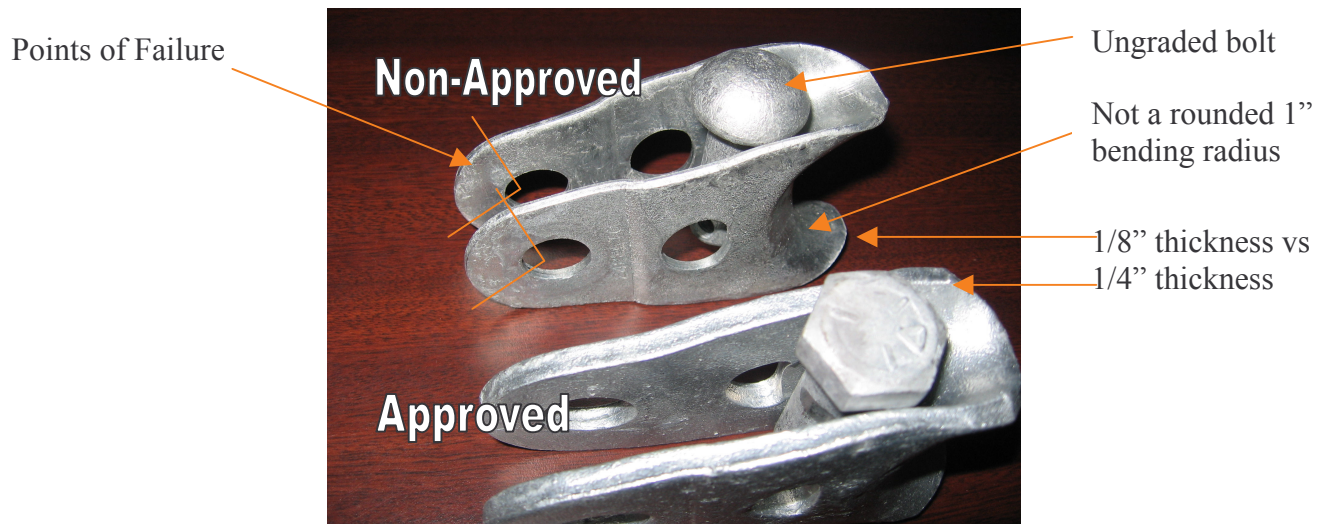
TECHNICAL AWARENESS –Thimble Clevis (Pig’s Ear) Power Line Hardware

ESA has been informed that through a missed inspection, a non-approved piece of equipment was installed on a distribution system, in Ontario. The non-approved Thimble Clevis (Pig’s Ear) was installed and subsequently failed. Through investigation of the event the following information was determined:

- Failed equipment was found to be a non-approved Thimble Clevis (Pig’s Ear)
- Installed Thimble Clevis broke at the “Points of Failure” pictured below
- Thimble Clevis was found to be ½ the thickness of the approved part
- Non-uniform radius of curvature that could lead to high stress points
- Non-graded bolt

REGULATION 22/04 REFERENCE:

Section 6 (2): For the purpose of establishing whether electrical equipment is approved under clause (1) (b), the equipment shall be tested **and inspected** in accordance with testing and inspection procedures that are adequate for that purpose.



ESA RECOMMENDS:

ESA recommends Local Distribution Companies investigate their Thimble Clevises to ensure only approved equipment is in stock and remove non-approved equipment from your system.

ADDITIONAL INFORMATION:

If you can provide additional information on this Bulletin or any other Utility issue, please contact ESA to share your experiences. Additional information requests and follow-up information may be directed to ESA. Please be prepared to quote Bulletin “DSB-03/07”.