

ACP NEWS

October 2013

Filing ACP Commercial-Industrial Small Jobs

Applications can be filed on-line or can be faxed to 1-800-667-4278 on the [ACP ICIA Small Job form](#).

There are 3 tiers for C-I Small Jobs. Each tier has specific scope of work parameters, audit ratio and application fee.

- 1 in 10 audit ratio \$28 app fee
- 1 in 5 audit ratio \$54 app fee
- 1 in 3 audit ratio \$95 app fee

In most, though not all cases, selecting the tier by device quantity if the scope is new or replacement devices only will be most cost effective for the Contractor. Select the tier carefully.

Scope of Work selection:

- Select 1 in 10 tier if:
 - Invoice value ≤ \$500, **OR**
 - 1 – 10 new devices only, **OR**
 - 1 – 20 replacement devices only
- Select 1 in 5 tier if:
 - Invoice value \$501 - \$2,000, **OR**
 - 11 – 30 new devices only, **OR**
 - 21 – 50 replacement devices only
- Select 1 in 3 tier if:
 - Invoice value \$2,001 - \$5,000, **OR**
 - 31 – 50 new devices only, **OR**
 - 51 – 100 replacement devices only

In all cases, the scope of work details including quantities must be provided. Applications without complete scope of work details will be returned to the Contractor asking for the required information. The scope of work details are essential so ESA can issue an accurate Certificate of Inspection for your customer.

1 in 10 Small Jobs

For HVAC, Residential, and 1:10 Commercial Small Jobs, the Contractor must provide the name and daytime phone # for the property owner in order for ESA to make access arrangements on the randomly selected site. Once the system selects the site to be inspected to meet the 1 in 10 audit ratio, ACP Office staff calls the customer to arrange for the inspection. This process minimizes the administrative time for the Contractor and the Inspector.

Please ensure your customers are aware that ESA may be calling to arrange to do an electrical inspection.

Reminder: Applications are to be filed when the Small Job Application form (3 or 4 sites per page) is full, or on the 1st and 15th of each month.

Generators and Transfer Switches

Generators and transfer switches require extra attention with the neutral bonding and grounding. Incorrect installation could result in electrical shock and/or equipment damage. As a result, generators and transfer switches are excluded from ACP.

If the installation at a site involves ACP eligible work and a generator and/or transfer switch, two (2) applications must be filed. The generator and transfer switch require inspection before they can be energized.

If a New Res has a combination meterbase with a transfer switch included, it is not eligible for ACP.

As per the Contractor Accountabilities in the ACP Manual, the Contractor must advise of work that is excluded from ACP at the time the application is filed.

ACP - the key to electrical safety!

CONTACT THE ACP OFFICE AT 800-249-4583



Shared Responsibility

ACP Contractors have a shared responsibility for safety. If a Contractor discovers existing hazards while on a work site, the Contractor **must** advise ESA.

Commercial/Industrial Service Work

Under the C/I vertical service upgrades or alterations for services up to and including 400A, 120/240V single phase or 120/208V three phase, are eligible for a pre-authorized reconnection. ACP does not apply if the service is converted from single to three phase or vice-versa.

Air Conditioner Installations

Air conditioner installations are not subject to the basic exemption in 2-005. Applications must be filed for **ALL** A/C installs – new and remove & replace.

Typically the wiring for a future A/C in a New Res is done by the Licensed Electrical Contractor and is included as part of the New Res notification. This is included in the New Res fee. In some cases an HVAC installer runs the wire for the future A/C at the rough-in stage then returns weeks or months later to install the A/C unit. This scenario requires the HVAC contractor to file two Small Job applications:

1. Run wire for future A/C; Ready for Final
2. Installation of the A/C unit; Ready for Final

Fee Increase Effective January 7, 2014

ESA consulted with Licensed Electrical Contractors and other stakeholders last year regarding proposed fee changes for 2013 and 2014. As a result of the consultation process, wiring fees will increase an average of 3% on January 7, 2014.

ACP Annual Membership fees will also increase 3% for renewals due on or after January 7, 2014.

Most Frequently Issued Defects

Ren Res including service upgrades/alterations

Code Grp	Code	Task Code Text
C2012-02	900	02-100(3) Complete panel directory req'd
C2012-26	680	26-722(f) AFCI req'd for branch circuits
C2012-12	1010	12-3010(3) Outlet box >4", 2 supports
C2012-26	240	26-700(11) GFCI prot recept <1.5m
C2012-12	330	12-510(1) Min support spacing, NMSC
C2012-26	540	26-712(g) Tamper Proof Recep req'd
C2012-26	440	26-712(a) Add recept per 1.8m rule
C2012-12	280	12-506(4)(a) NM Cable near heat ducts
C2012-12	420	12-516 Mech prot req'd, NMSC < 32mm

New Res

C2012-12	280	12-506(4)(a) NM Cable near heat ducts
C2012-26	240	26-700(11) GFCI prot recept <1.5m
C2012-12	330	12-510(1) Min support spacing, NMSC
C2012-12	420	12-516 Mech prot req'd, NMSC < 32mm
C2012-12	1010	12-3010(3) Outlet box >4", 2 supports
C2012-12	360	12-514 Mech prot NMSC on raftr/joist >1m
C2012-10	10	10-106 Ground Electric Service
C2012-06	280	06-312(1) Drain/seal Service Raceway
C2012-10	200	10-406(4) Bond gas piping, min #6

HVAC

C2012-12	780	12-1308 Liquid tight flex cond. support
C2012-04	260	04-036(1) Colour White For Power
C2012-02	790	02-034 OC prot req'd as per mftrs specs
C2012-02	800	02-034 OC prot req'd as per nameplate
C2012-02	1265	02-308(1) 1 m work space req'd
C2012-02	730	02-034 Equipment to be Approved for Use
C2012-12	280	12-506(4)(a) NM Cable near heat ducts
C2012-02	900	02-100(3) Complete panel directory req'd

ACP - the key to electrical safety!

Technical Corner

Question: Is a single line diagram required where an installation incorporates high voltage equipment that consists solely of a single cubicle or metal enclosed unit substation that contains only one high-voltage switch?

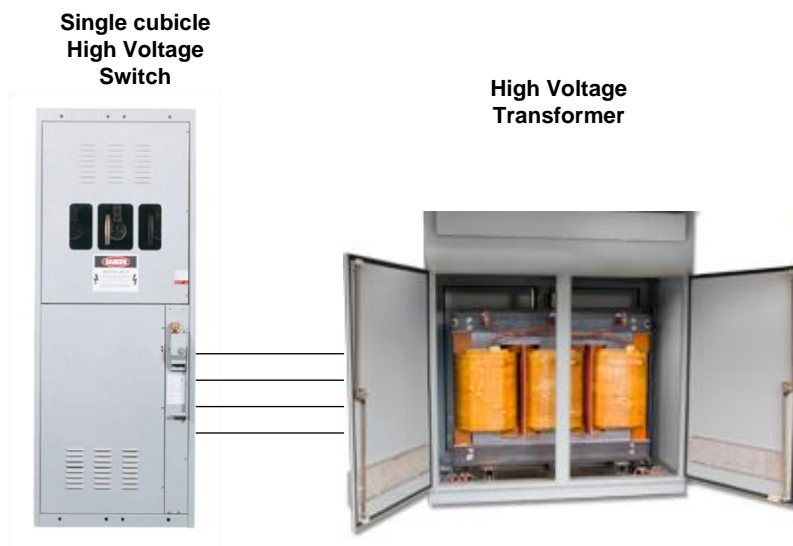
Answer: No.

Rationale: Rule 36-006(5)(a) requires a single line diagram to be provided in a conspicuous location where the installation includes metal enclosed switchgear. Rule 36-006(5)(d) exempts the single line diagram requirement where the equipment consists solely of a single cubicle or metal enclosed unit substation that contains only one high-voltage switch.

Background: Many ACP contractors have been identifying a missing single line diagram deficiency to ESA on the SBMCR (Substation Maintenance Condition Report) where the Code does not require a single line diagram. This causes our inspectors to write a deficiency to the facility, when technically it is Code compliant. Please ensure that this deficiency is only identified on installations that require a single line as per Rule 36-006.

Single line diagrams are always required where the possibility of feedback to a high voltage installation exists (Rule 36-006(4)(b)). (ie: Two high voltage transformers feeding a double-ended board c/w tie breaker).

Also take note that single line diagrams are not required for low voltage installations (other than parallel generation as per Rule 84-030).



Single Line Diagram not required

ACP - the key to electrical safety!

CONTACT THE ACP OFFICE AT 800-249-4583