

Bulletin 2-21-2
Electrical installations that are not compliant with the
Ontario Electrical Safety Code
Rules 2-018 and 2-030

Issued January 2016
Supersedes Bulletin 2-21-1

Scope

- (1) Introduction
- (2) Definitions
 - (a) Classification of defects
 - (b) Deviation and postponement
- (3) ESA response on non-Code compliant installations
 - (a) Defect response
 - (b) Deviation and postponement response

(1) Introduction

The Electrical Safety Authority (ESA) is responsible for public electrical safety in Ontario as designated by Ontario Regulation 89/99 and is responsible for enforcing the Electricity Act and Regulations, including the Ontario Electrical Safety Code, Ontario Regulation 164/99.

When the Electrical Safety Authority performs an inspection of an electrical installation and determines that the installation does not comply with the Ontario Electrical Safety Code (OESC), the non-compliances are treated as defects, which are classified as outlined in this Bulletin. In some cases a onetime postponement or deviation from the Code may be granted for non-compliance.

(2) Definitions

(a) Classification of defects

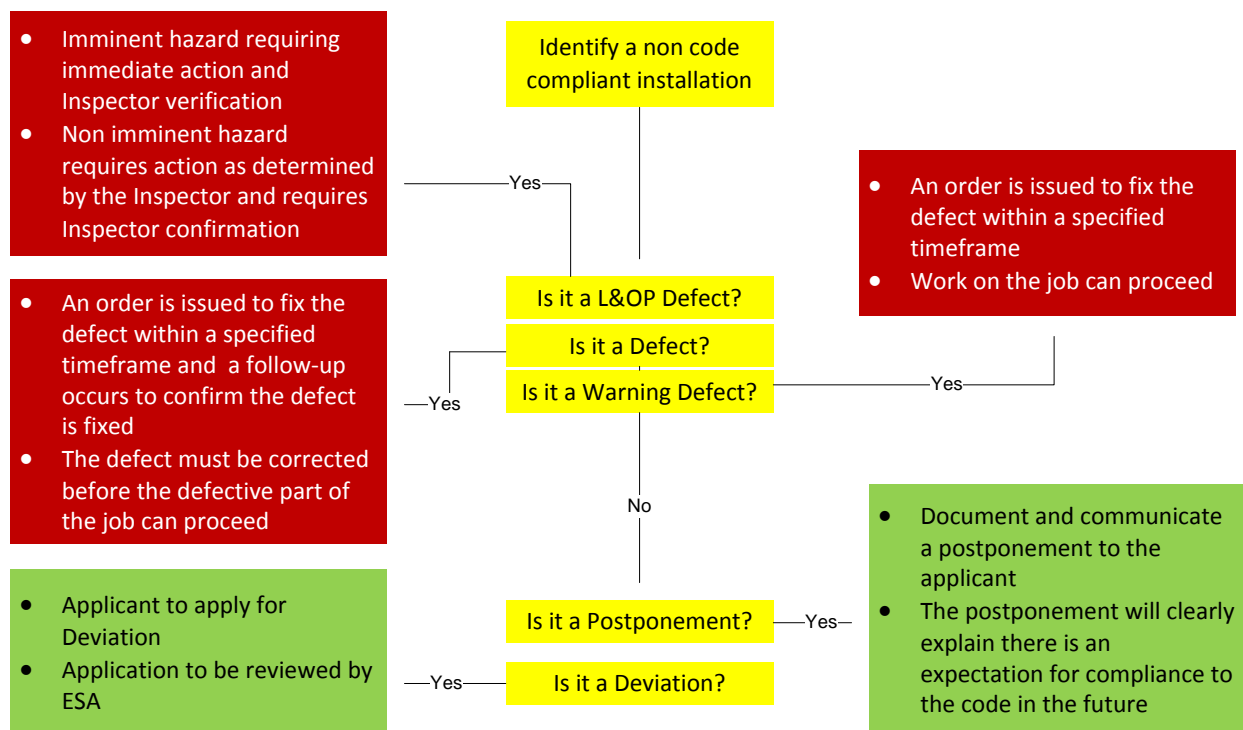
- **Life and/or property (L&OP) defect** – An ESA Inspector determines that the electrical installation does not comply with the OESC and presents a high likelihood of shock or fire.
- **Defect** - An ESA Inspector determines that the electrical installation does not comply with the OESC; however the deficiency does not present a high likelihood of shock or fire. The ESA Inspector determines that the non-compliant installation represents moderate risk.
- **Warning Defect** – An ESA Inspector determines that the electrical installation does not comply with the OESC however the likelihood of shock and fire is low or the likelihood of exposure is low. The ESA Inspector determines that the non-compliant installation represents low risk.

(b) Deviation and postponement

- **Postponement** – An ESA Inspector determines that the electrical installation does not comply with the OESC however the installation does not create undue hazard to persons or property and presents a minor degree of deviation from the OESC requirements.
- **Deviation** - The electrical installation does not comply with the OESC however the installation does not create an undue hazard to persons or property and presents a moderate degree of deviation from the OESC requirements.

(3) ESA response to non-Code compliant installations

Figure B1- ESA response on non-Code compliant installations



Every contractor who has performed work on an electrical installation and has been notified by the inspection department that the installation does not conform to this Code shall remedy all defects in work that is not approved within such time and in such manner as the notice from the inspection department directs.

Failure to remedy defects as directed by the Electrical Safety Authority will initiate policy that may lead to the disconnection of power, prosecution under the Electricity Act or deferment (electrical contractors).

All non-compliances will be communicated in writing to the inspection notification Applicant (or property owner where applicable).

(a) Defect response

- **Life and/or property (L&OP) defect** - Where “Life and/or Property” hazards have been identified by the inspection department, immediate action to ensure public safety is required as per ESA policy.
- **Defect** - An ESA Inspector issues an order to fix the defect within a specified time. The defect must be corrected and re-inspected before the defective part of the job can proceed.
 - If previous postponements or warning defects have been repeated (Applicant has not changed behaviour), then a defect may be issued even if the non-compliant installation presents a low risk.
- **Warning Defect** – An ESA Inspector issues an order to fix the defect within a specified timeframe. Work on the job can proceed.
 - Warning defect may also be issued if previous postponements have not changed the Applicant behaviour and were repeated.

The follow-up on all non-Code compliant installations will be as per the inspection department policy. Although the Ontario Electrical Safety Code is not retro-active, ESA will follow-up on non-compliant installations at existing installations where it deems public safety is at risk (General inspections, Hazard investigations etc.).

(b) Deviation and postponement response

The inspection department may grant a deviation or postponement from the requirements of this Code. A deviation or postponement is lawful in respect of an electrical installation where adequate proof that the deviation or postponement does not create an undue hazard to persons or property under the circumstances has been provided to the inspection department.

- **Postponement** – An ESA Inspector documents and communicates a postponement to the Applicant. The postponement will clearly explain there is an expectation for compliance to the Code in the future.
- **Deviation** - An ESA Inspector advises the Applicant to apply for Deviation. The deviation will require a review and analysis by ESA.