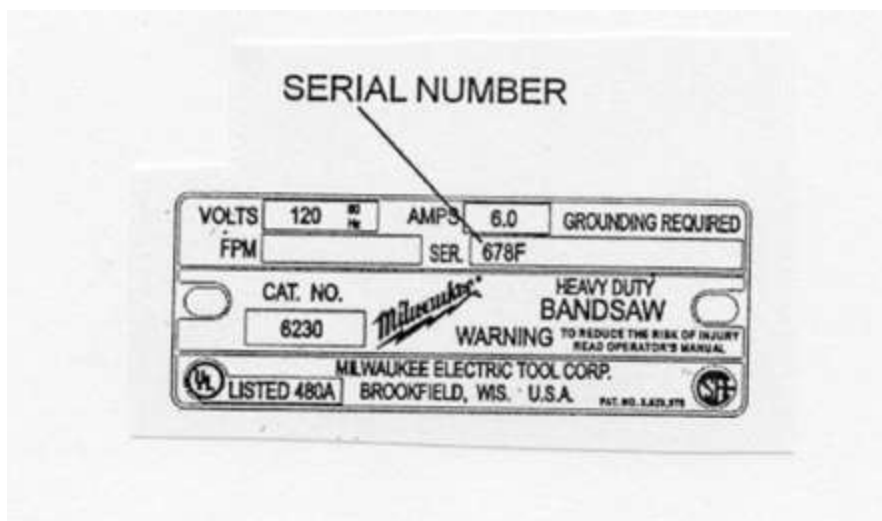


### Milwaukee Electric Tool Corporation and CSA International Announce Voluntary Recall to Repair Variable Speed Portable Electric Band Saws

Toronto, Ontario - In co-operation with CSA International, Milwaukee Electric Tool Corporation, of Brookfield, WI, is voluntarily recalling its variable speed portable electric band saws with catalog numbers 6230 and 6234, sold as 6230, 6232-6 and 6234. They contain a switch, a component supplied by Eaton Corporation of Cleveland, which may stick in the "on" position. As a result, the tools can continue to operate after the trigger has been released, which could pose a risk of injury to consumers.

Milwaukee has not received any reports of injuries related to the use of these band saws. This recall is being conducted to help prevent the possibility of injury.



The band saws are marked with serial numbers 678E400060001 through 678E400360291 and 678E499520116 through 678E499520400 (catalog number 6230), 678E400021141 through 678E400371101 (catalog number 6232-6) and 674D400060015 through 674D400240167 (catalog number 6234). The plate with these serial numbers (upper right-hand corner) and the CSA mark (lower right-hand corner) is located on a flat surface below, and at a right angle to, the handle grip.

Home center and hardware stores, industrial distributors and factory service dealers sold these recalled band saws from January 18, 2000 through September 15, 2000.

Consumers should stop using these band saws immediately, and take them to their nearest Milwaukee factory service center or Milwaukee authorized power tool service station. To locate the nearest service center, or for more information, contact Milwaukee product service staff toll-free at 1-800-274-9804 or 1-888-889-5045. Milwaukee recommends returns be made via United Parcel Service if the item is being shipped and the company will reimburse the tool owner for the shipping expense.