

Rheem Canada Ltd. and CSA International Announce the Voluntary Corrective Action Program for PV40 and PV50 Gas-Fired, Power-Vented Water Heaters Produced from January 1992 through December 1996

Toronto, Ontario - In co-operation with CSA International, Rheem Canada Ltd. of Hamilton, Ontario announced today the voluntary corrective action program only for specific models of their PV40 and PV50 propane and natural gas power-vented water heaters which were produced between January 1992 through December 1996. Rheem has become aware that in some cases cracks have developed in the ABS fitting at the power-vent blower connection to the plastic vent piping on certain units.

Additionally, a preliminary program to inspect and repair affected water heaters has revealed that in a small percentage of cases, the vent system has become separated at the power-vent outlet or at some other point along the vent system. Users of the specific models noted below are advised to examine their vent system and if a separation of the vent piping is found, to immediately contact Rheem Canada at the toll-free number listed for further instructions.

Models affected include the screen enclosure type PV40 and PV50 models with serial numbers 0192J86099 through 1296J26914 and 0192K89566 through 1093K65614 inclusive (production between Jan 1, 1992 and Jan 31, 1996). Production outside these dates is unaffected.

Rheem Canada is developing a program with gas suppliers to replace the vent components in question and anyone with an affected water heater should contact Rheem Canada directly at 1-800 -371-4955 for further information. Illustrations and information to help homeowners identify these water heaters is available online at www.rheem.on.ca.

**INSTALLATION INSTRUCTIONS FOR
2" VENT KIT ASSEMBLY: RHEEM PV40 & PV50 SERIES**

These instructions are for the installation and replacement of the blower vent kit assembly. This kit effects the Rheem PV40 & PV50 Models only.

This Kit (part number AS38961), includes the following parts, (refer to the diagram below).

- | | |
|------------|------------------------------|
| 1. AP12270 | CPVC/ABS vent pipe assembly. |
| 2. 09-653 | Rubber "U" channel. |
| 3. 14-061 | Support bracket. |
| 4. 29-050 | Two (2) sheet metal screws. |
| 5. AP12255 | Instruction sheet. |

FOR YOUR SAFETY, READ THE FOLLOWING INSTRUCTIONS BEFORE PROCEEDING WITH THE INSTALLATION.

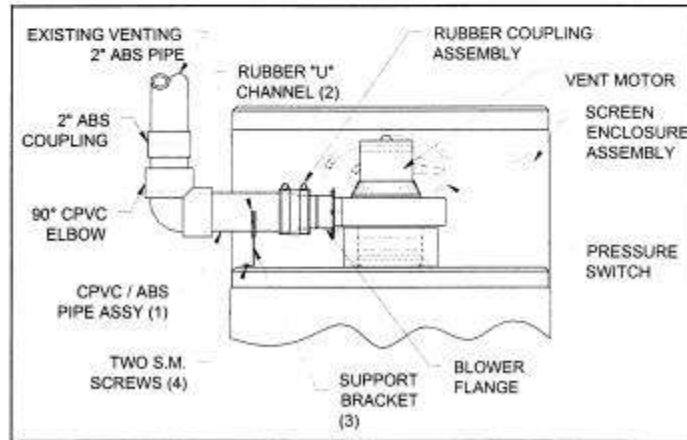
WARNING

This vent outlet assembly **MUST** be installed by a certified Gas Technician in accordance with these instructions and diagrams. The original instructions supplied with the water heater **MUST** also be followed. Incorrect installation can cause bodily injury, property damage and or death. It is important that the vent pipe engages fully into any pipe fitting and kept in that position until the adhesive has fully cured. **DO NOT** drill or punch holes in the plastic pipe or fittings.

TO INSTALL THE 2" VENT KIT ASSEMBLY.

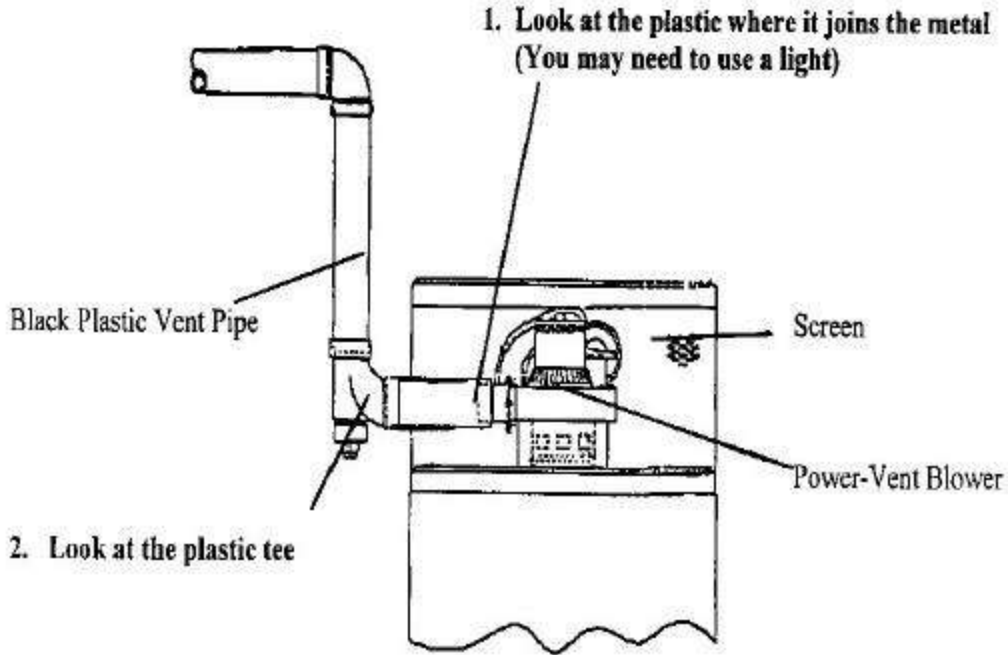
1. Disconnect 120 VAC power supply from the water heater.
2. Remove the screen enclosure assembly.
3. Cut the existing vertical (2" ABS) vent pipe immediately after the first elbow, (or condensate tee), closest to vent motor.
4. Disconnect and remove the existing ABS pipe and tee or elbow from the blower flange. (Do not remove the blower flange).
5. Attach the new CPVC /ABS vent pipe assembly to blower by inserting the rubber coupling onto blower flange. Ensure Rubber Coupling is properly seated and the 90° elbow is in a vertical position. Firmly tighten both gear clamps.
6. Place the support bracket (with rubber "U" channel) underneath the CPVC pipe, and fasten the bracket to the top of heater with the two self tapping screws.
7. Re-attach the existing vertical ABS pipe to the ABS coupling. **MAKE SURE** the vertical ABS pipe system is fully inserted into the ABS coupling. **USE AN APPROVED ABS PLASTIC PIPE CEMENT TO JOIN THE ABS PIPE AND ABS COUPLING. FOLLOW THE INSTRUCTIONS PROVIDED WITH THE SOLVENT CEMENT.**
8. Re-install the screen enclosure as it may be necessary to trim the opening to allow for clearance of new vent pipe. Do not allow jagged edge to rest on the vent pipe. Secure the enclosure using the existing screws.
9. A thorough inspection of the existing venting system must be performed after the installation of this kit is complete. Carefully inspect the entire venting system for any signs of cracks or fractures, particularly at the joints between elbows or other fittings and the straight runs of vent pipe. Check the system for any signs of sagging or other stresses in the joints as a result of mis-alignment of any components in the system. If any of these conditions are found, they must be corrected in accordance with the venting instructions in the Owners Guide.
10. Re-connect the 120 VAC power supply & verify operation of the water heater.

Refer to Owners Guide provided with the Water Heater for operating, installation and maintenance instructions.



DEC./99
AP12255 rev. 1

Areas to Look for Plastic Vent Separation



Top of Power Vented Water Heater

Customers are requested to look at the black plastic vent pipe in the area where it connects to the water heater. The first area to look at is inside the screen, you may need to use a light to see clearly. Look at the black plastic pipe where it joins the water heater. The second place to look is the piece of black plastic that comes out of the screen of the water heater. This part looks like a "T" or a "Y". If you find any vent separation unplug the water heater and call Rheem at 1-800-371-4955 for further instructions.