

March 3, 2011

Liebherr Recalls Built-In Refrigerators Due to Injury Hazard; Door Can Detach

Toronto, ON – The Electrical Safety Authority is notifying the public that Liebherr has announced a voluntary recall of the following consumer product. Consumers should stop using recalled products immediately.

Name of Product: Liebherr Built-In 30-Inch Wide Bottom Freezer Refrigerators

Units: Approximately 1,320 in Canada.

Manufacturer: Liebherr-Hausgeraete Lienz GmbH of Austria

Importer: Liebherr-Canada Ltd of Ontario

Hazard: The refrigerator's door can detach, posing and injury hazard to consumers.

Incidents/Injuries: In Canada and the United States, Liebherr-Hausgeraete Lienz has received 10 reports of doors detaching. No injuries reported.

Description/Models: This recall involves Liebherr built-in 30-inch wide bottom freezer refrigerators with model numbers and index numbers listed below. The refrigerators were sold individually or as a side-by-side companion units. The refrigerators come in stainless steel and various custom finishes and are built into the kitchen cabinetry. "Liebherr" is written on the top interior control panel. The model number can be found on a label located behind the bottom drawer on the left interior side of the single door refrigerator.

Sold by: Appliance and specialty retailers nationwide for between \$4,400 and \$5,000.

When was distributed: The models were manufactured and sold between February 2004 and January 2011.

Manufactured in: Austria

Remedy: Consumers with recalled refrigerators should contact Liebherr immediately to schedule a free in-home repair. Consumers should Contact the firm for further instructions.

Consumer Contact: For more information, consumers may contact Liebherr toll-free at 1-888-543-2437 from 8AM to 5PM ET Monday through Friday or visit the firm's website www.liebherr.ca

Remarks: The recalled units are certified to Canadian Standards by Intertek. For more information about Intertek's product certification process please visit: www.intertek.com.

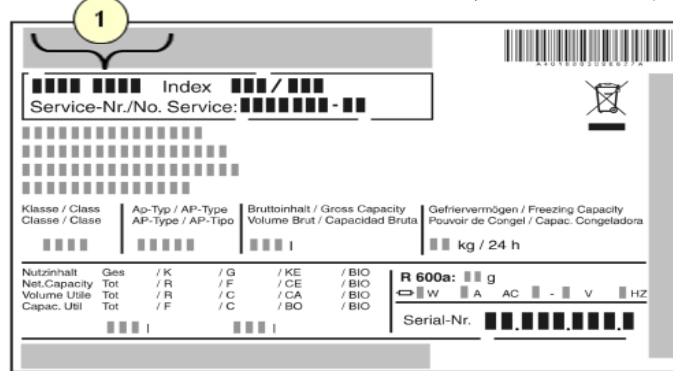
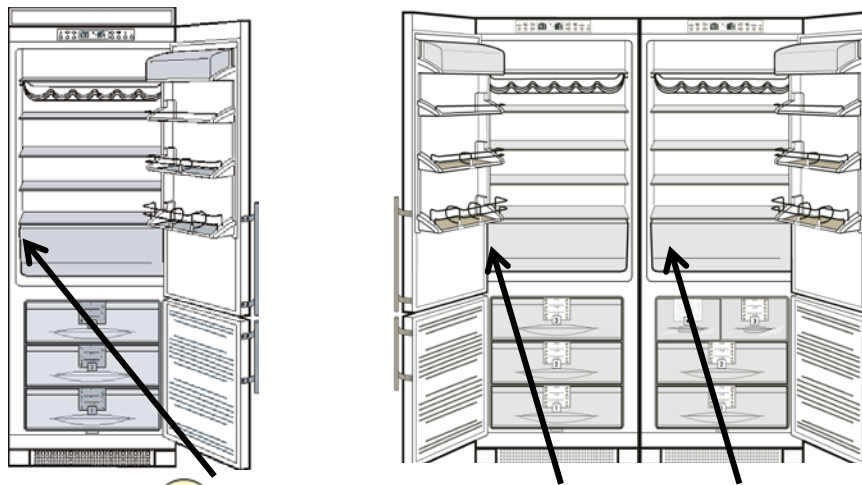


March 3, 2011

Model Number	Index Number
C 1600	16 / 137
	16A / 137
C 1601	15 / 237
	15A / 237
	15B / 237
	15F / 237
	15G / 237
	16 / 237
	16A / 237
CI 1600	15G / 137
	16 / 137
	16A / 137
CI 1601	15 / 237
	15A / 237
	15B / 237
	15F / 237
	15G / 237
	16 / 237
	16A / 237
C 1650	15 / 137
	15A / 137
	15B / 137
	15C / 137
	15D / 137
	15H / 137
	15I / 137
	16 / 137
	16A / 137
	16B / 137
C 1651	15A / 237
	15B / 237
	15C / 237
	15D / 237
	15H / 237
	15I / 237
	16 / 237
	16A / 237
	16B / 237
CI 1650	15 / 137
	15A / 137
	15B / 137
	15C / 137
	15D / 137
	15H / 137
	15I / 137
	16 / 137
	16A / 137
	16B / 137
CI 1651	15A / 237
	15B / 237
	15C / 237
	15D / 237
	15H / 237
	15I / 237
	16 / 237
	16A / 237
16B / 237	
CI 1700	14A / 137

March 3, 2011

Location of the Model Number and Index Number



1 Model Number and Index Number

